



“National
Standards &
Benchmarks for
Effective
Catholic
Elementary and
Secondary Schools”

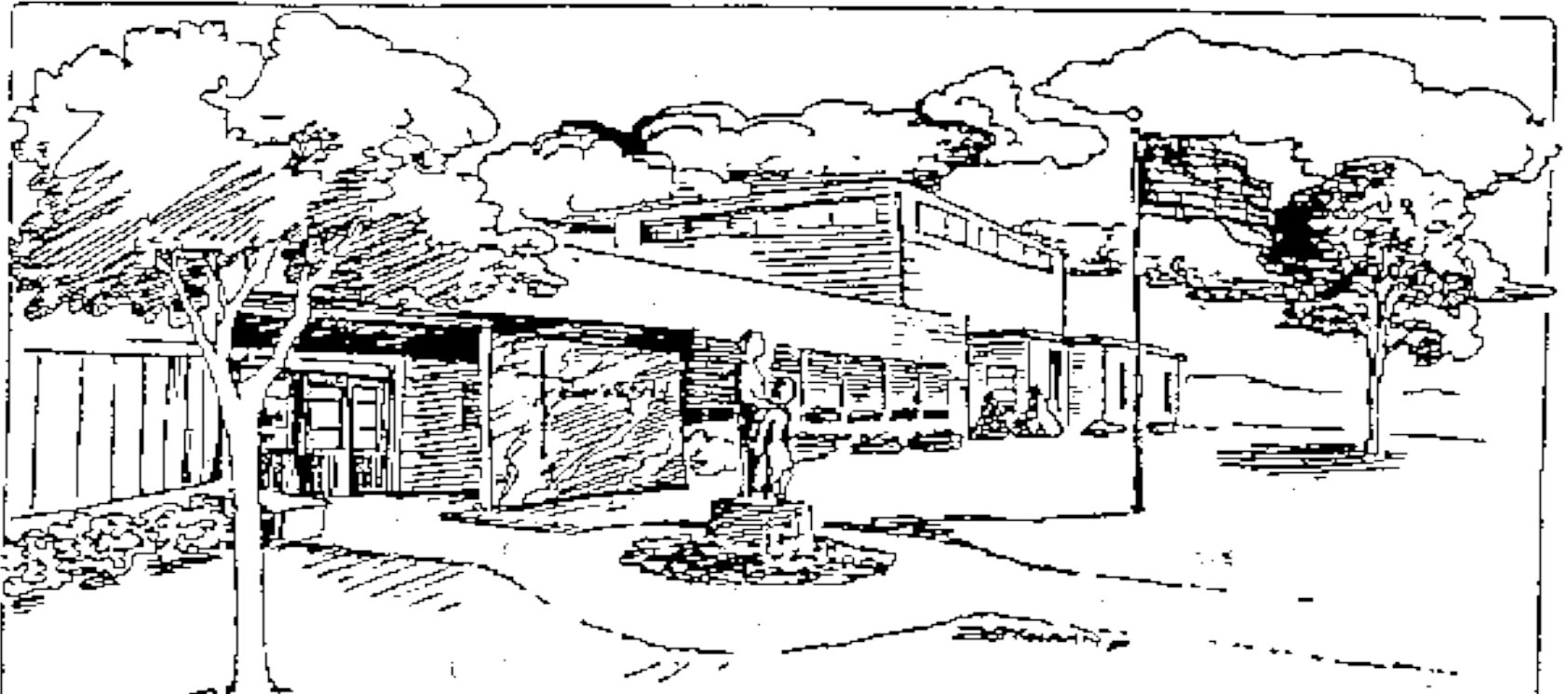
Momentum Feb/ Mar. 2012

Mission & Catholic Identity

Standard 1: An excellent Catholic School-



is guided & driven by a clearly
communicated mission



Bishop Garrigan Schools are dedicated to providing quality, parish supported, value centered Catholic education to students and families of north central Iowa. We seek to achieve a balance between Christian social conscience and academic excellence through a combination of belief in God, service to our fellow human beings, intellectual preparation, and physical development.

that embraces a Catholic Identity



rooted in Gospel values



centered on the Eucharist



and committed to faith formation



academic excellence and service.



Standard 2:
An excellent Catholic school-



Provides a rigorous academic program
for religious studies and catechesis in
the Catholic Faith...



Set within a total academic curriculum that integrates faith, culture and life.



Standard 3:
An excellent Catholic school-



Provides opportunities outside the
classroom for student faith
formation,



Participation in liturgical and communal prayer



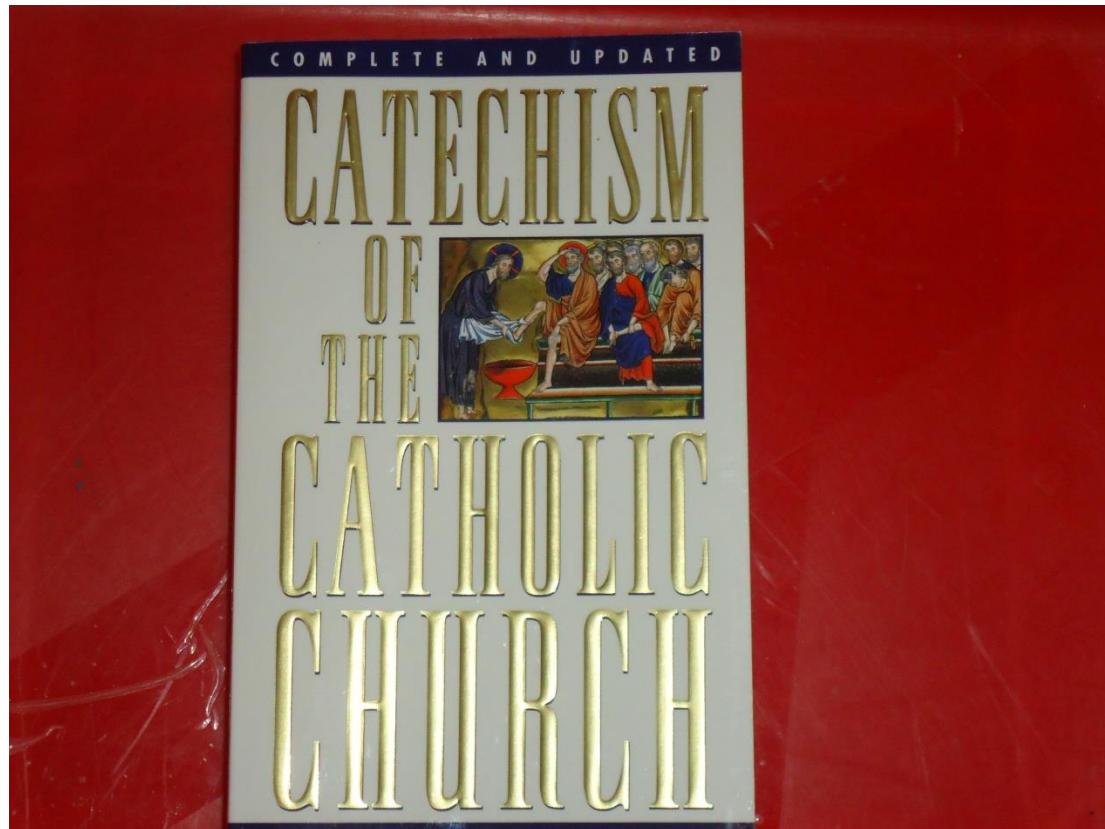
And action in service for social justice.



Standard 4:
An excellent Catholic School-



Provides opportunities for adult formation and action in service of social justice.



Governance & Leadership

Standard 5:
An excellent Catholic school-



Has a governing body which exercises responsible decision making in collaboration with leadership team for development of the mission.

- Bishop Garrigan School Board Appoints Lynn Miller as President.



Standard 6:
An excellent Catholic school-



Has a qualified leadership team
empowered by the governing body
to realize & implement the school's
mission.

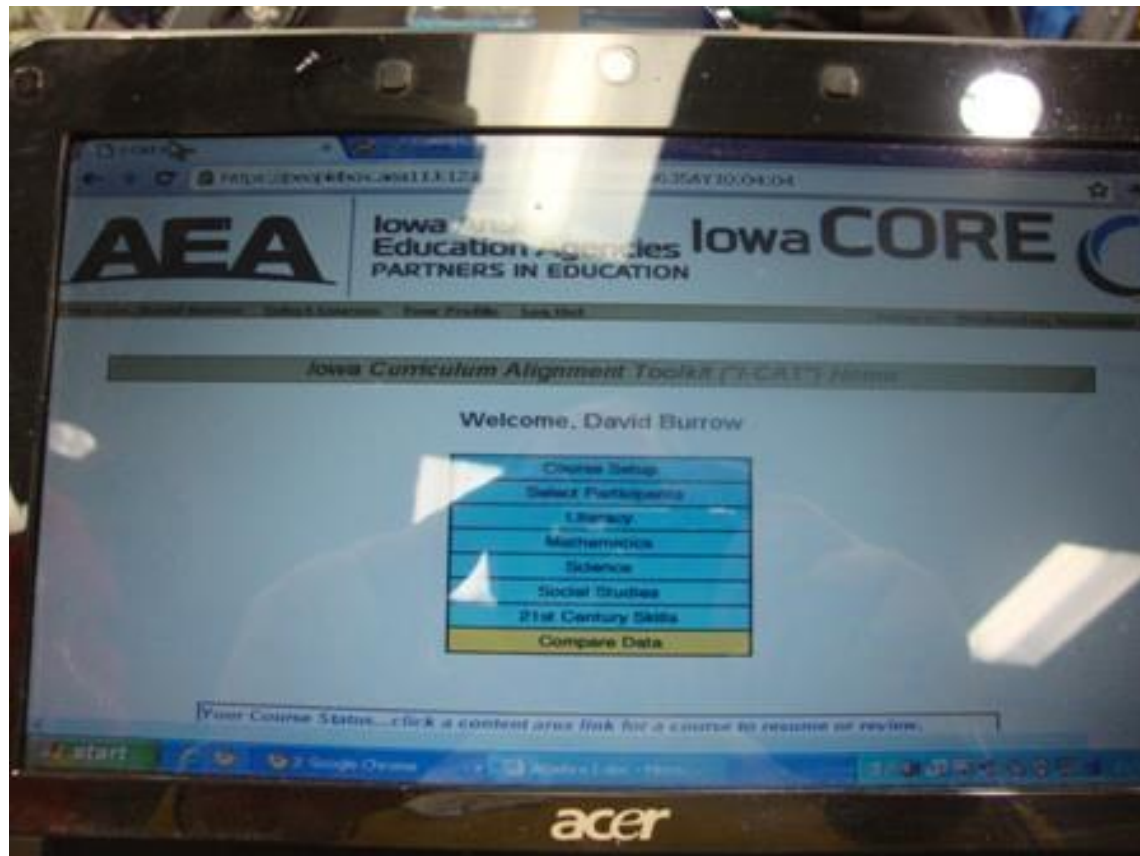


**Academic
Excellence**

Standard 7:
An excellent Catholic School-



Has an articulate & rigorous curriculum aligned with standards,



21st century skills



and gospel values.



Standard 8:
An excellent Catholic School-



Uses school-wide assessment methods to document student learning & program effectiveness.

Bishop Garrigan Schools

- Nationwide 60% of all students are considered either proficient or advanced in reading, mathematics, and science, while 40% have scores that are below the proficient level.
- The Bishop Garrigan schools have a higher percentage proficient at all grade levels than the nationwide average.

Reading Proficiency

Reading (Oct.2012)	Non-Proficient (NP)	Proficient (P)	Advanced (A)	Total Proficient (P + A)
4 th Grade	33%	47%	20%	67%
8 th Grade	27%	73%	0%	73%
11 th Grade	23%	62%	15%	77%

To make the student performances transparent

Mathematics Proficiency

Math (Oct. 2012)	Non-Proficient (NP)	Proficient (P)	Advanced (A)	Total Proficient (P + A)
4 th Grade	25%	47%	28%	75%
8 th Grade	19%	65%	16%	81%
11 th Grade	18%	74%	8%	82%

and to inform the continuous review
of curriculum and improvement of
instructional practices.



Operational Vitality

Standard 9:
An excellent Catholic School-



Provides programs and services
aligned with the mission to enrich the
academic program





and support the development of
student family & life.



Standard 10:
An excellent Catholic School-



Provides a 3-5 year financial plan that includes both current and projected budgets emphasizing faithful stewardship.

	Student Aid Form	2013	PARENT NAME ↓
		2014	
	Diocese of Sioux City Monsignor Lafferty Tuition Foundation <small>Income must fall between 0-300% poverty level to qualify (Iowa residents only)</small> Catherine Birzle Education Trust <small>Only High School students qualify</small> Bishop's Education Fund <small>Income must fall between 301-400% poverty level to qualify (no state residency requirements)</small> Local Tuition Assistance <small>Participating schools only</small> Help Desk at 1-866-424-6443		
Application Conditions: <ul style="list-style-type: none">• Student(s) must live in Iowa for MLTF funding.• Local assistance is open to all students, including those residing outside of Iowa. Please speak with your local school administrator to determine if local tuition assistance is available.• Incomplete Applications cannot be processed.	Directions: <ul style="list-style-type: none">• One application is to be filed per family even if dependents attend more than one school.• All applications are to be returned to PSAS. Online applications available at www.psas.org. Use authorization code: MLTF.• If you need assistance completing the application, please contact the help desk at 1-866-424-6443.		
This form must be postmarked no later than APRIL 2, 2013.			
TO COMPLETE THIS APPLICATION YOU WILL NEED TO INCLUDE:			
Please note: This application requires documentation for income received in 2012.			
<ol style="list-style-type: none">1. Detailed copies of all pages and Schedules of your 2012 Federal Income Tax Return Form 1040, 1040A, or 1040EZ (as filed with the IRS) for individuals listed in Sections A and B. <u>Recaps and/or Summary Forms are not acceptable.</u> If you file Schedule(s) A, C, E, or F, you must provide copies. If you have not yet filed, or are not required to file a tax return, see the REQUIRED DOCUMENTATION section of the INSTRUCTIONS and page 6 Section M.2. Copies of all 2012 W-2 Wage and Tax Statement Forms, all 2012 1099/1099R for Interest/Dividends, Pensions/Annuities and/or Misc. Income Forms for individuals listed in Sections A and B (Please make sure all documentation is copied on regular 8½ x 11 paper - documentation CANNOT be returned.).3. Documentation of TOTAL AMOUNTS received in 2012 for all Non-Taxable Income (see Section G for specific requirements).4. Check or Money Order payable to PRIVATE SCHOOL AID SERVICE for the non-refundable application fee of \$22.00 (All returned checks will incur an additional fee of \$25.00.).5. This application form filled out in its entirety, signed and dated by the individuals listed in Sections A and B.6. Please review pages 5 and 6 for explanations/directions as you complete this form.			
IMPORTANT: If the above items do not accompany this application, your application will not be considered complete.			
Keep a copy of this completed application and all documentation for your records.			

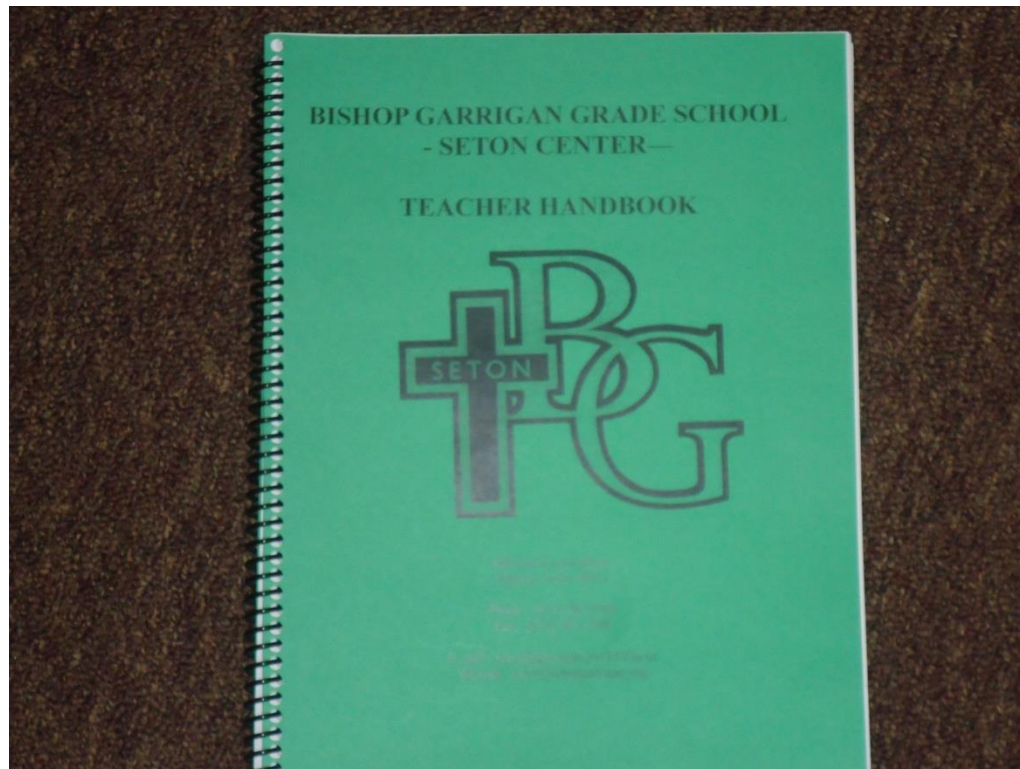
Form #056 (2012) To check the processing status of your application, go to www.psas.org.

1

Standard 11:
An excellent Catholic School-



Operates in accord with published human resource/personnel policies which affect all staff. Responsibilities are well defined according to mission.



Standard 12:
An excellent Catholic School-



Develops and maintains facilities,
equipment and technology
management plan designed to
support the mission.



Standard 13:
An excellent Catholic School-



Enacts a comprehensive plan to develop the mission of the school through communications,

- The Bishop Garrigan Schools have begun an exciting campaign called "Continuing the Tradition ... Expanding the Vision" which will help our school remain strong well into the future. There are three main goals of the campaign:
- Building Project - a state-of-the-art gymnasium, together with additional classroom space and offices (\$2,000,000)
- Staff Endowment - to retain the finest instructors and continue our academic excellence (\$1,000,000)
- Tuition Assistance & Facilities Funds - to increase enrollment and maintain and modernize our facilities (\$1,000,000)

marketing,



enrollment management



and development.



